

AN EXTREME HAMMER FOR EXTREME APPLICATIONS

When Rammer customers speak, we listen. We recognise that they know their markets, business potential, applications and work demands far better than we could ever hope to.

So, when our customers told us they wanted an extreme hammer for the very toughest of jobs; a model that is designed to work versatile positions, especially horizontally and tackle tunnelling duties in hard rock; a hammer that could withstand high levels of dust; we listened. And then we acted.

Our team of highly experienced designers and engineers harnessed the very latest technology and advanced materials to create a new model that is every bit as innovative as it is tough.

Extreme hammers for extreme applications. Rammer PRO Range hammers comprise all the key features that have made Rammer the world's leading hydraulic hammer brand. But they also incorporate a number of key additions that truly take the Rammer PRO Range to the extreme.



2577 PRO

4099 PRO

5011 PRO

Minimum working weight, kg (lb) ¹⁾	1940 (4280)	3750 (8270)	5300 (11 680)
Carrier weight, allowed range, t (lb) ²⁾	21...32 (46300...170500)	34...55 (75000...121300)	43...80 (94800...176400)
Impact rate, short stroke, bpm ³⁾	450...750	540...670	450...560
Impact rate, long stroke, bpm ³⁾	–	360...560	370...480
Operating pressure, bar (psi) ³⁾	135...145 (1960...2105)	135...145 (1960...2105)	140...150 (2030...2175)
Oil flow range, l/min (gal/min)	140...200 (37.0...52.8)	250...320 (66.0...84.5)	280...340 (74.0...89.8)
Input power, kw (hp)	48 (64)	77 (103)	108 (145)
Tool diameter, mm (in)	135 (5.31)	166 (6.54)	190 (7.48)

¹⁾ Includes average mounting bracket and standard tool.

²⁾ Check carrier's lift capacity from carrier manufacturer.

³⁾ Actual impact frequency depends on oil flow, oil viscosity, temperature and material to be broken.



INTERNATIONAL BUSINESS

Sandvik sells and supports its Rammer-branded products through a global distributor network that operates in 130 countries around the world.

For further information on the Rammer PRO Range, please contact your local dealer.

YOUR LOCAL RAMMER DEALER



p. (08) 8345 0555 | e. sales@renex.com.au | renex.com.au
163 Francis Road, Wingfield SA 5013



Sandvik Mining and Construction Oy
Taivalkatu 8, P.O.Box 165
FI-15101 Lahti, Finland
Phone Int. +358 205 44 151
www.rammer.com

**Ram
mer**
PRO

INCLUDING
ALL MODELS



**BREAKING
IN THE
EXTREME**

KEY FEATURES AND YOUR BENEFITS

ALL THE RAMMER PRO RANGE HAMMERS ARE BASED ON THE ORIGINAL, FIELD PROVEN MODELS RAMMER 2577, 4099 AND 5011 AND SHARE WITH THEM MANY KEY FEATURES THAT HAVE ESTABLISHED THOSE UNITS AS ONE OF THE MOST POPULAR LARGE HAMMERS IN THE WORLD. THESE FEATURES INCLUDE:

- A new operating principle that allows the PRO hammers to be purpose-matched to individual applications and materials using a simple working mode selector located on the breaker.
- An Idle Blow Protector to provide greater levels of protection.
- Long-life, high-tension VIDAT tie rods for improved reliability, extended service periods and lower operating costs.

These standard Rammer features are backed by a range of enhancements that help the PRO hammers to withstand extreme working conditions.

DUST PROTECTED STRUCTURE

- Patented tool sealing structure
- Seal between housing and power cell
- Sealed steel covers on side openings
- Top cover plate
- Sealed thru holes for hydraulic hoses
- Sealed hose connections for grease, air and water



DESIGNED FOR HORIZONTAL WORKING

- Sturdy housing design
- Fully supported power cell
- High resistant wear plates
- Top buffer design
- TS Bushing as a standard



EASY INSTALLATION

- Stump hydraulic hoses on top
- All auxiliary connections on top plate

EASY MAINTENANCE FOR WATER JET

- Water hoses safe and simple to replace
- Replaceable water nozzles on bottom plate



PROPER WATER JET FOR ALL APPLICATIONS

- Nozzle selection available for effective water spread
- Reduced water consumption



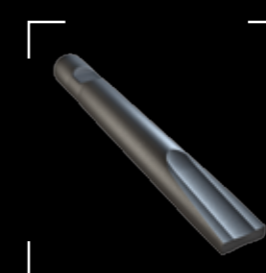
PRO TOOLS

To match the demands of the extreme applications, Rammer PRO Range hammers are offered with special tools for horizontal primary breaking:

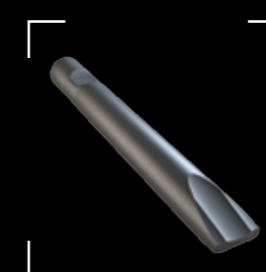
Moil point



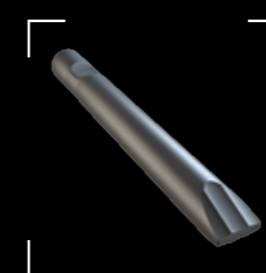
Hard rock chisel



Standard chisel



Limestone chisel



2577, 4099 and 5011 tool types are compatible in other applications.

UNIQUE RAMMER AGW UNIT

For customers working especially in tunneling applications, Rammer has pulled together a full package of auxiliary systems and solutions designed to protect the hammer from the demands of this extreme application, lower owning and operating costs, and to make the Rammer PRO Range hammers toughest breakers in the world. Rammer AGW Unit (AirGreaseWater Unit) comprises the proven Ramair air flush system that prevents potentially harmful dust ingress; the Ramlube I automatic lubrication system to ensure consistent and thorough greasing; and the Rammer Water Jet dust suppression package to minimize the creation of dust during breaking. Hydraulically-actuated and requiring no additional power supply, the AGW Unit is easy and safe to install and maintain and ensures that the Rammer PRO Range hammer are protected and productive throughout their working life.



All these key features are backed by long-life, wear resistant, genuine Rammer parts that are readily available for the company's global dealer network.